

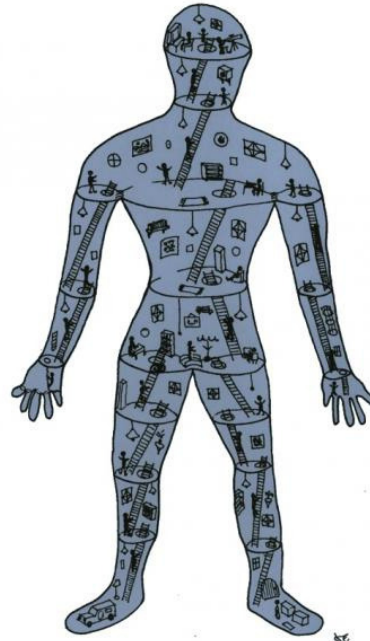
# WHAT IS CENTREPIECES?

Centrepieces was founded in 1999 by a group of artists all of whom experienced mental health problems and were living in Bexley and surrounding areas. Originally set up with a £5K Millennium Award from the National Lottery, Centrepieces was for many years based at the Crayford Centre, moving in June 2014 to new premises at the Lodge, Hall Place - a move financially supported by Oxleas NHS Foundation Trust.

Centrepieces exists to promote mental health recovery through the arts, affording opportunities for people to participate in art activities and to exhibit and sell their work. It also tries to promote a better understanding of mental health to the wider public.

All registered artists can participate in groups and workshops at the Lodge, as well as using the space to develop their own work individually. Centrepieces applies for ad hoc funding for art projects and commissions such as public art in the local community, with artists playing a key role in leading these.

Centrepieces is a Charitable Incorporated Organisation (CIO), Registration No. 1160300.



'Inner Man', John Exell, 2003. Ink on paper.

## • CONTACT •

The Lodge, Hall Place  
Bourne Road  
Bexley, Kent  
DA5 1PQ

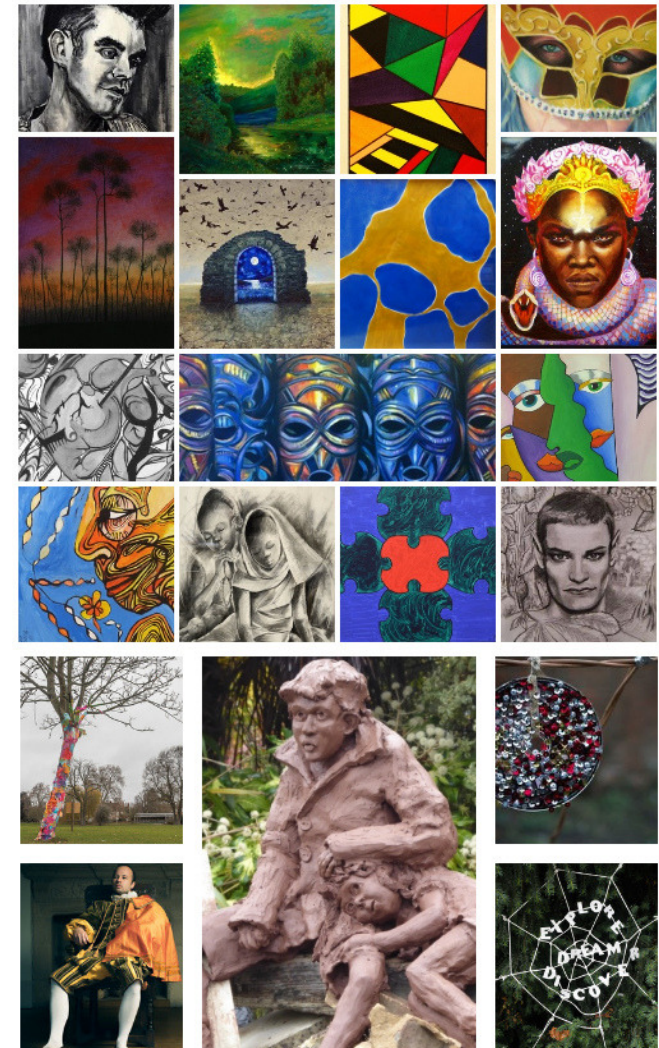
### FOR ALL ENQUIRIES

01322 554589  
info@centrepieces.org

### FOLLOW US ON SOCIAL MEDIA:

Website: [www.centrepieces.org](http://www.centrepieces.org)  
Blog: [www.centrepiecesblog.blogspot.com](http://www.centrepiecesblog.blogspot.com)  
Facebook: Centrepieces Mental Health Arts Project  
Twitter: @CentrepiecesCIO

**CENTREPIECES**  
Mental Health Arts Project  
Registered Charity 1160300



01322 554589  
[WWW.CENTREPIECES.ORG](http://WWW.CENTREPIECES.ORG)

# WHAT CENTREPIECES OFFERS

Centrepieces is open to anyone who has experienced mental ill health or has a strong empathy and wishes to practice art or volunteer in the project.

**“A YEAR AND A HALF AGO, I  
COULDN'T HAVE DONE THIS.  
IT'S HELPED ME TO BUILD  
BACK MY CONFIDENCE AND  
NOW I CAN HELP OTHER  
PEOPLE.”**

*Karen Larkin, artist and volunteer*

## **BENEFITS OF JOINING CENTREPIECES ARE NUMEROUS AND INCLUDE:**

- Improving artistic skills and ability •
- Gaining confidence and self-esteem •
- Opportunities to exhibit and sell your artwork •
- Participation in helping others to develop as artists •
  - Volunteering roles within the project, such as administration, finance, events, fundraising and project management •



Centrepieces Exhibition, 2017

## • PROJECTS •

### **PREVIOUS EXAMPLES OF CENTREPIECES PROJECTS INCLUDE:**

#### **'TWELVE' IN HALL PLACE GARDENS**

A 2017-18 series of Twelve public art projects located within the Hall Place grounds.

#### **TERRAZO NEST SCULPTURE AT HALL PLACE**

#### **'THE WORRIER' SCULPTURE IN CRAYFORD RIVERSIDE GARDENS**

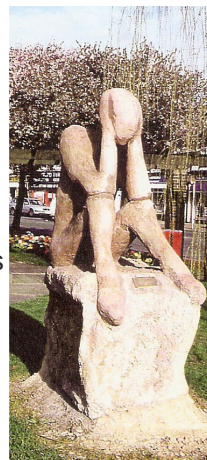
#### **'THE EMOTIONAL SPIRAL' AT PINEWOOD HOUSE OXLEAS NHS FOUNDATION TRUST**

#### **MOSAICS AT UPLAND PRIMARY SCHOOL**

### **CURRENT ONGOING WORKSHOPS:**

- Stone, clay and wood sculpture
- Ceramics
- Photography club
- Friday open sessions
- Taster sessions & short courses

Centrepieces holds regular art exhibitions and auctions in venues such as local libraries, as well as an annual exhibition in the Stables Gallery at Hall Place. It also participates in local festivals and events. Regular visits are organised to places of artistic interest, such as the Queens Gallery and Turner Contemporary.



'The Worrier'  
Centrepieces, 2000  
Public sculpture

## • MEMBERSHIP •

You can join Centrepieces as an artist or someone who wishes to practice art. This is primarily an opportunity for people who have experienced mental ill health, but is also open to those who have an interest in mental health and art.

You can join as a volunteer, either as someone who has experienced mental health issues or wishes to support the project, or gain experience in this area. Volunteers come from a variety of backgrounds and experience in mental health and art, or have other skills to offer.

You may also apply to become a CIO Member with voting and other rights as specified in Centrepieces' constitution, in recognition of your interest and contributions. It is even possible to apply to become a trustee, if you feel that you have sufficient experience and a relevant background to help run Centrepieces as a charity.

To apply, contact Centrepieces at the address overleaf, or call: 01322 554589; or email:  
[info@centrepieces.org](mailto:info@centrepieces.org).

The Lodge is normally open Monday to Friday (exc. Wednesday), 10am - 4pm, and on Saturday, 10am - 1pm.

