

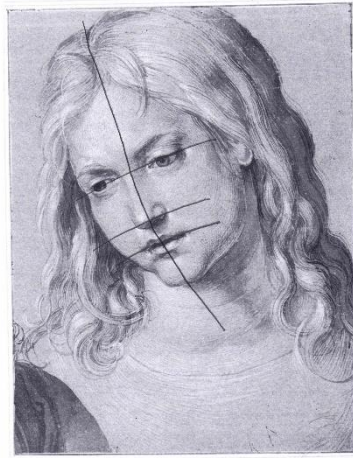
GIRL BY DURER

Step by Step Portrait drawing with John Exell

Original Plus Lines.

Draw lines on the face of the drawing, the centre line down the middle of the face, and lines through the eyes, nostrils and mouth.

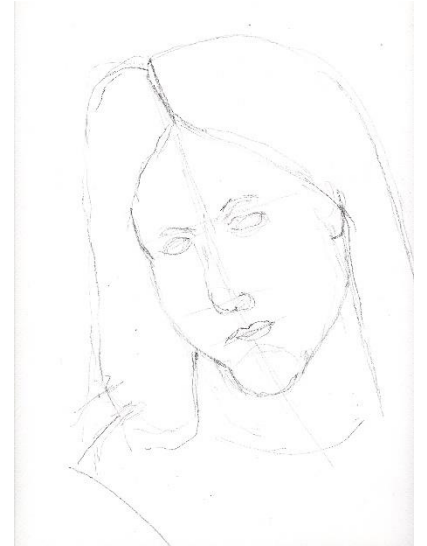
Lightly transfer these lines to your drawing, to help you begin your drawing.



DRAW LINES ON FACE, THE FACE CENTRE LINE, AND LINES TO HELP POSITION THE EYES, NOSE AND MOUTH. TRANSFER THESE LINES TO HELP YOU BEGIN THE DRAWING.

Drawing 1.

Begin your drawing very lightly, roughing out basic positions of the main features. Do not think about detail yet. Concentrate on accuracy, and the rest will follow.



Drawing 2.

Begin to do detail. Concentrate on the face, get that right first. Forget about the hair for the time being.



Drawing A3.

Add a bit more detail to the face as before.



GIRL BY DURER

Step by Step Portait drawing with John Exell

Drawing A4.

Add a bit more detail to the face.

Now to tackle the hair.



Drawing A5

Done the hair.



Drawing A6.

Just a bit more.

..... Finished.

